

Worthy Is The Lamb

Words and Music by
Darlene Zschech

♩ = 76

VERSE 1

A

D

A/C#

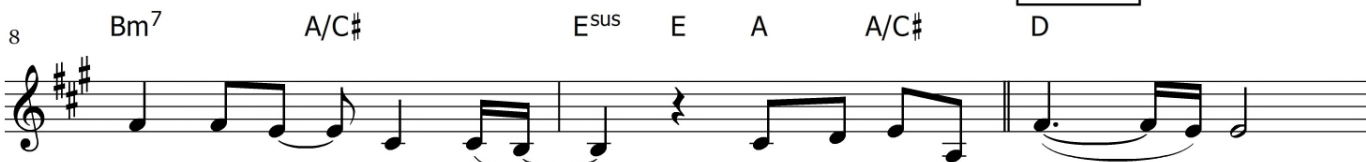


1. Thank You for the cross, _____ Lord. _____ Thank You for the

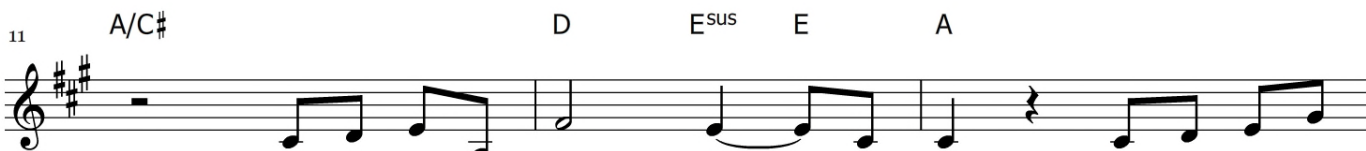


price You ___ paid. ___ Bear-ing all my sin and _shame, _ in love You _ came _ and

VERSE 2



gave a - maz - ing grace. _____ 2. Thank You for this love, _____ Lord.



Thank You for the nail pierced ___ hands. ___ Washed me in Your



cleans-ing ___ flow, ___ now all I ___ know, ___ Your for - give - ness and ___ em-brace. _

CHORUS




___ Wor - thy _ is ___ the Lamb, _____ seat - ed _ on ___ the throne. .

21 D^2 E E/D A/C# D



Crown You now with man - y crowns, You

24 Bm^7 Bm^7/A E E/G# A E/G#




reign vic-tor - i-ous. High and lift - ed up,

28 Bm^7 A/C# D^2 E E/D A/C#




Je - sus, Son of God. The dar-ling of heav - en, cru - ci - fied.

32 D E^{sus} Bm^7 A/C# D




Wor-thy is the Lamb. Wor-thy is the

36 1. Bm^7 A/C# E 2, 3. Bm^7 A/C#




Lamb. Thank You for the Lamb.

39 **VAMP** E^{sus} Bm^7 A/C# D Last time to Coda ⊕



Wor - thy is the Lamb. Wor - thy is the

42 1, 3, 4. Bm^7 A/C# 2. Bm^7 A/C# E^{sus} D.S. al Coda



Lamb. Lamb.

45 \oplus Coda
Bm⁷ A/C# E

Lamb. The

Detailed description: This block contains the musical notation for measures 45 and 46. Measure 45 starts with a treble clef, a key signature of two sharps (F# and C#), and a common time signature. The melody consists of a series of eighth notes: G4, A4, B4, C5, followed by a quarter rest. Measure 46 begins with a whole rest, followed by a quarter note G4, and ends with a quarter note A4. Chord symbols Bm7, A/C#, and E are placed above the staff. The lyrics 'Lamb.' and 'The' are positioned below the staff.

ENDING

47 E/D A/C# D

dar - ling of heav - en, cru - ci - fied.

Detailed description: This block contains the musical notation for measures 47, 48, and 49, marked as an 'ENDING'. Measure 47 has a treble clef, two sharps, and common time. The melody is: G4, A4, B4, C5, D5, E5. Measure 48 has a 2/4 time signature and the melody: G4, A4, B4, C5. Measure 49 has a 4/4 time signature and the melody: G4, A4, B4, C5, D5. Chord symbols E/D, A/C#, and D are placed above the staff. The lyrics 'dar - ling of heav - en, cru - ci - fied.' are written below the staff.